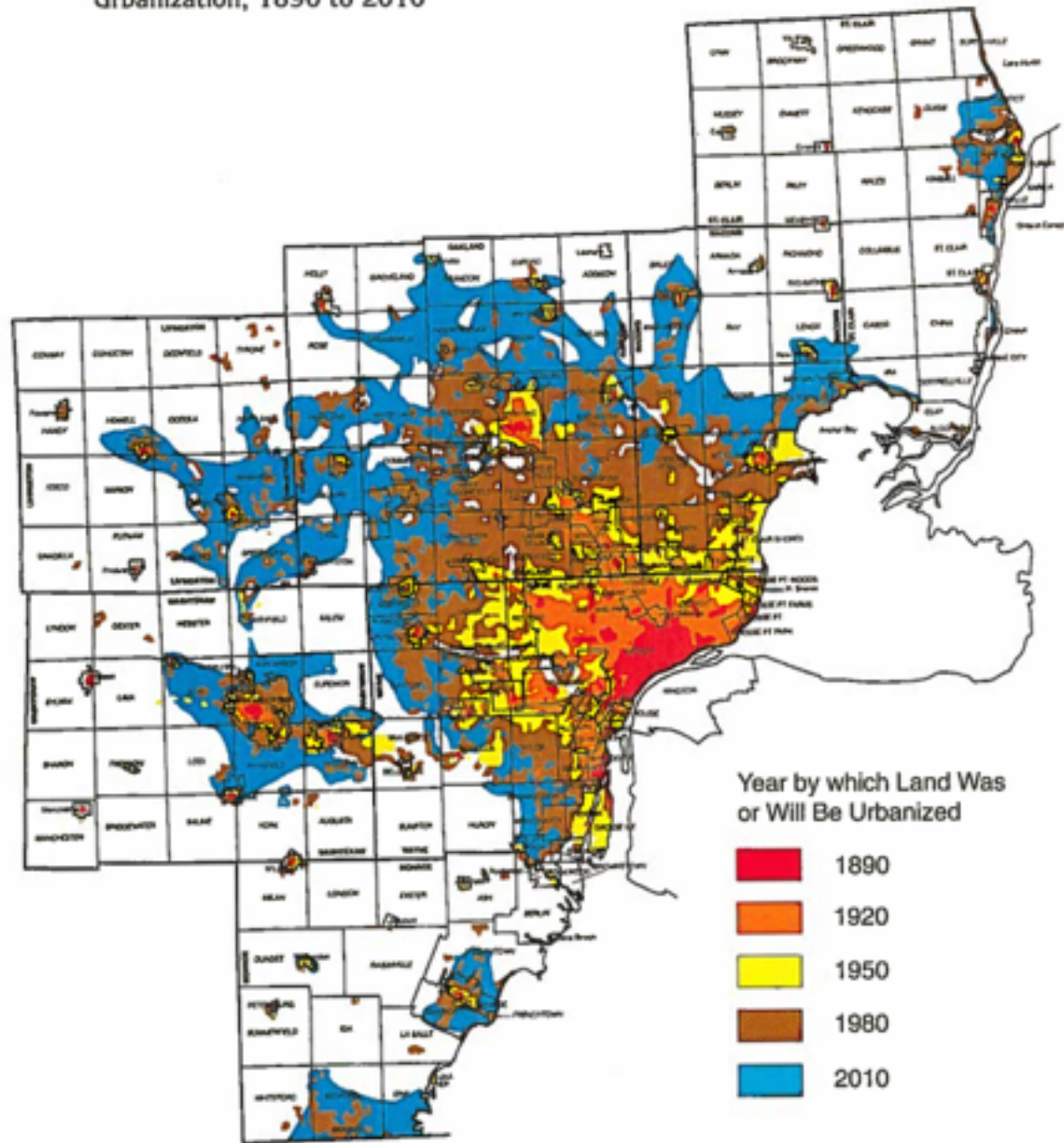
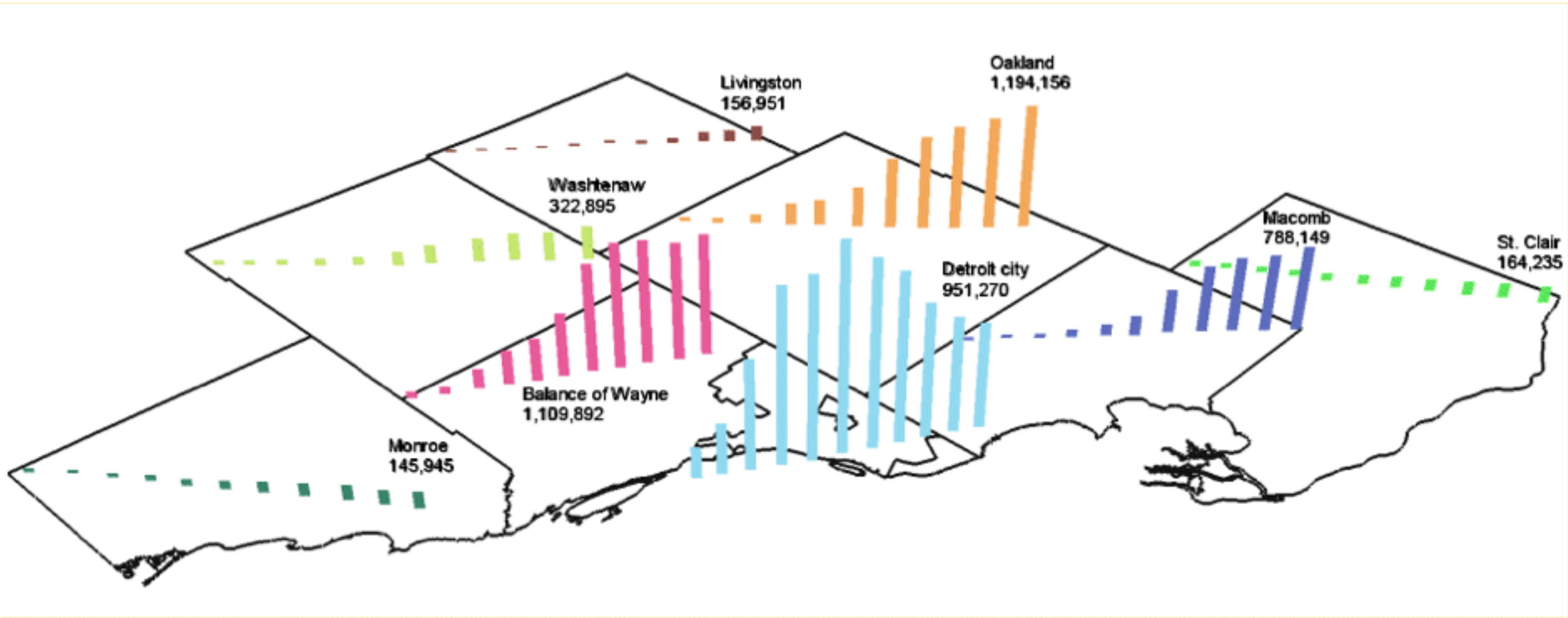


Map 1
Urbanization, 1890 to 2010



Source: SEMCOG, 1991.



Detroit has worst job sprawl in the country, report says



By David Muller | dmuller@mlive.com

[Follow on Twitter](#)

on April 18, 2013 at 12:48 PM, updated April 18, 2013 at 1:17 PM

[Print](#)

[Email](#)

DETROIT, MI - Regardless of any shift that may be happening in terms of [companies moving from Detroit's suburbs to its inner core](#), the damage of the region's sprawl has already been done.

That's according to a Brookings Institution report released Thursday, that says that 77.4 percent of the 1,380,896 jobs in the Detroit-Livonia-Warren metro area are 10 to 35 miles from any central business district.

[Read the full the report here.](#)



Looking south toward downtown Detroit

David Muller

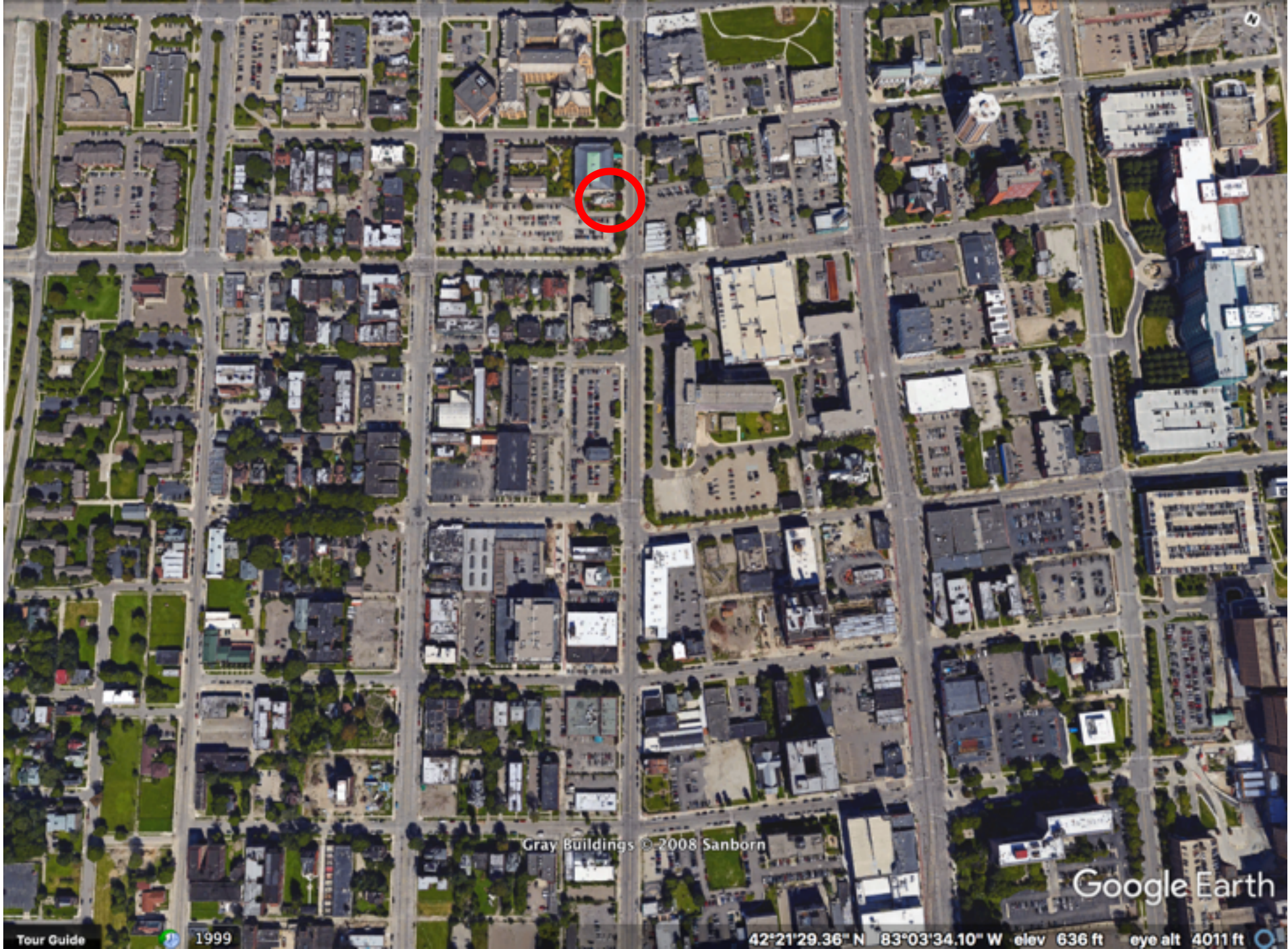


It's your roots that inspire us to help grow Armenia.

How far will you go to make a difference in Armenia?



[Donate now.](#)



Gray Buildings © 2008 Sanborn

Google Earth

Tour Guide



1999

42°21'29.36" N 83°03'34.10" W elev 636 ft eye alt 4011 ft



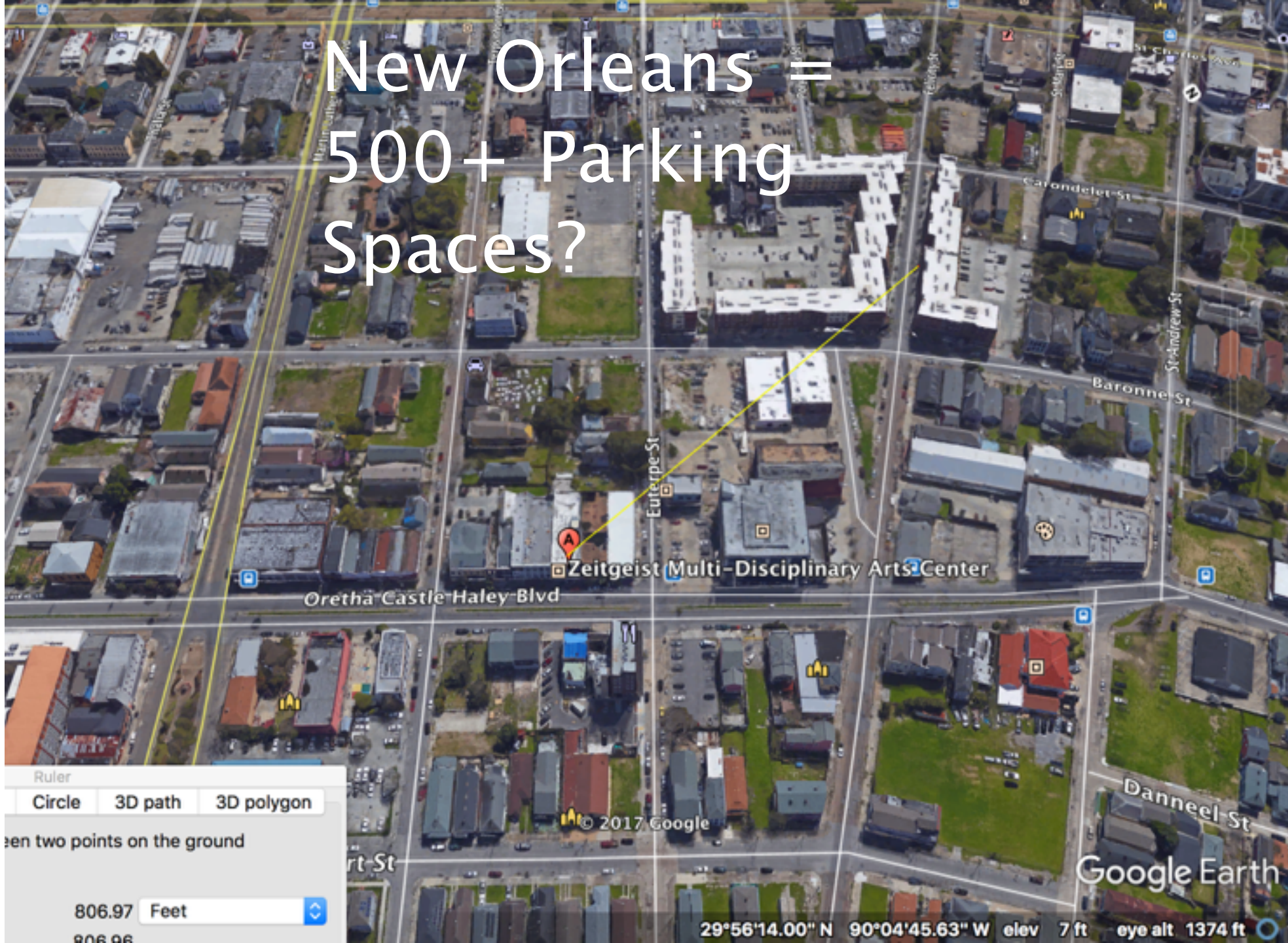
Ruler

Circle 3D path 3D polygon

two points on the ground

800.38 Feet

New Orleans =
500+ Parking
Spaces?



Ruler

Circle 3D path 3D polygon

Place two points on the ground

806.97 Feet

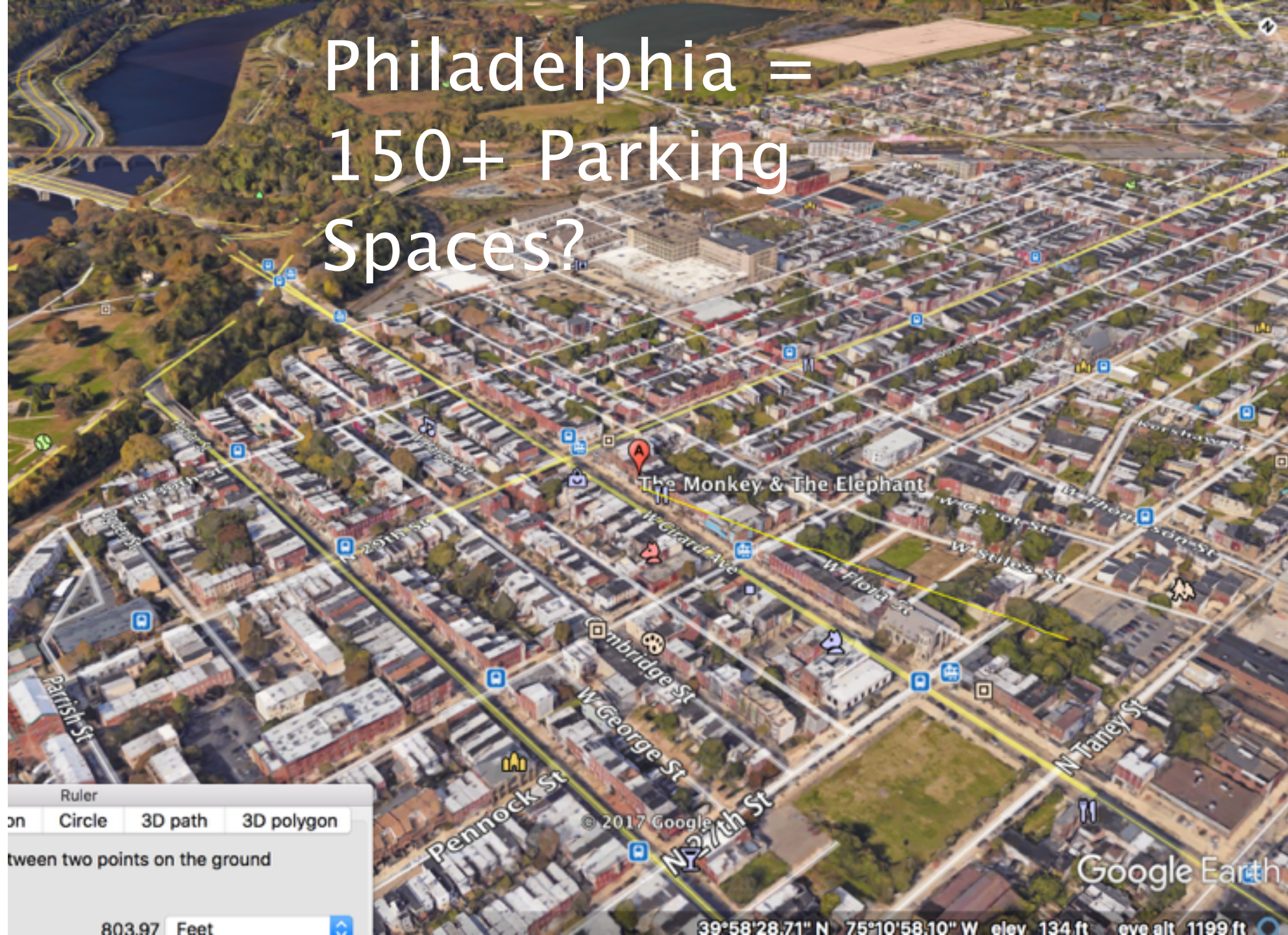
806.96

© 2017 Google

29°56'14.00" N 90°04'45.63" W elev 7 ft eye alt 1374 ft

Google Earth

Philadelphia =
150+ Parking
Spaces?



Ruler
on Circle 3D path 3D polygon
between two points on the ground
803.97 Feet

© 2017 Google
39°58'28.71" N 75°10'58.10" W elev 134 ft above alt 1199 ft

Google Earth

Top Ten Complaints in 2011



Following are the top complaint categories that most frequently appeared in the agencies' top ten lists. Their ranking in the top ten in 2010 is noted in parenthesis.



1. **Auto:** (1) Misrepresentations in advertising or sales of new and used cars, lemons, faulty repairs, leasing and towing disputes
2. **Credit/Debt:** (2) Billing and fee disputes, mortgage modifications and mortgage-related fraud, credit repair, debt relief services, predatory lending, illegal or abusive debt collection tactics
3. **Home Improvement/Construction:** (3) Shoddy work, failure to start or complete the job
4. **Retail Sales:** (3) False advertising and other deceptive practices, defective merchandise, problems with rebates, coupons, gift cards and gift certificates, failure to deliver
5. **Utilities:** (4) Service problems or billing disputes with phone, cable, satellite, Internet, electric and gas service
6. **Services:** (5) Misrepresentations, shoddy work, failure to have required licenses, failure to perform

North Ar 201

7. **(Tie) Internet Sales:** (6) Misrepresentations or other deceptive practice, failure to deliver online purchases; **Landlord/Tenant:** (8) Unhealthy or unsafe conditions, failure to make repairs or provide promised amenities, deposit and rent disputes, illegal eviction tactics
8. **Fraud:** (9) Bogus sweepstakes and lotteries, work-at-home schemes, grant offers, fake check scams, the grandparent scam and other common frauds
9. **Real Estate:** (not in top 10 last year) Timeshare sales and resales, retirement communities and assisted living facilities, real estate fraud



**Stop paying
for parking
tickets**

Fixed